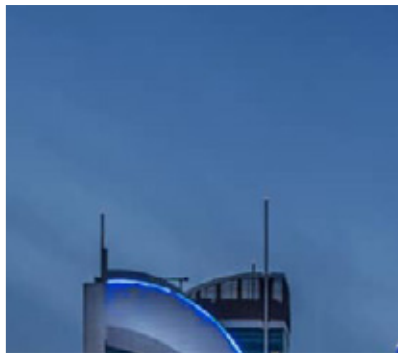
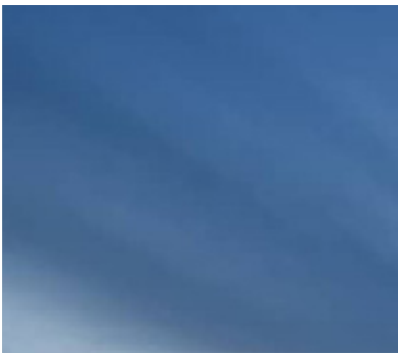


Pledge

CONSTRUCTION AND TRADING W.L.L.

CONSTRUCTION - ELECTROMECHANICAL - FITOUT - JOINERY



www.pledgect.com

Tel: +974 44 155 175 | Fax: +974 44 155 175 | Email: info@pledgect.com

    Pledge Const

Table of Contents

- 04** Who We Are
- 05** About Us
- 06** Organisation Chart
- 07** Our Services
- 09** Scope of Business
- 10** Current Position
Future Look
- 11** Our Values
Our Strengths
- 12** Our Strategy
Uniqueness & Differentiation
- 13** Capabilities & Potentials
- 14** Business Development & Growing Lines
- 15** Policy Of Quality
- 17** Policy Of Safety
- 19** Our Certificates
- 20** Our Projects



WE BRINGING LIFE TO SPACE

Who We Are

PLEDGE is a full service construction, MEP and fit-out company providing turnkey services for interior fit-out projects across a wide variety of sectors, including retail, hospitality, healthcare, fitness, commercial, residential and food and beverage. With our team of professionals, we deliver projects on time, on budget and with an exceptional level of quality.

We do all kind of services ranging from 3d design, turnkey interior fit-out, civil construction, carpentry, joinery & MEP works to meet the demands of various requirements.

We would like to offer our services to execute assigned works with the highest quality possible in compliance with Qatar construction specifications and international standards.

Our company, **Pledge** Constructions and Trading W.L.L. is well-equipped to help our clients deliver their projects on time, with budget and first class quality.

Our formula is simple: We hire the best professionals, understand our Client's needs and objectives, and then do our utmost to meet them.

MISSION

Our Mission is to create interiors that reflect our client's personality by capturing their design dreams & making them a reality.

To be our clients' partner of choice by delivering innovative and effective solutions that continuously exceed their expectations.

To ensure that all our clients derives the maximum benefit from our dedicated personalized service, receiving innovative design, with the ability to implement in reality.

To be responsive to schedule, budget and functional goals without compromising the aesthetics of the creative notion.

Vision

Our vision is to establish a strong presence in the Arabian Gulf region, especially in Qatar, and to develop a sustainable long-term growth path. We aim to be the leading provider of MEP, fit-out, civil, and trading services, recognized for our unparalleled quality, innovative solutions, and commitment to sustainability. We aspire to set new industry standards, foster long-term partnerships, and drive progress through continuous improvement and cutting-edge technology. Our goal is to shape a better future for our clients, communities, and the environment by consistently delivering excellence in every project.

About Us

PLEDGE Construction and Trading W.L.L. was founded on the values of innovation, quality, and excellence in service delivery. From the beginning, our goal has been to achieve customer satisfaction and meet their needs with the highest level of professionalism.

Today, we are proud that our company is wholly owned and managed by Mr. Mohamed S. Abdul Rahman (General Manager), who has over 15 years of experience in the construction field. The company has proven its ability to deliver large and challenging projects on time and within budget, maintaining quality and specifications.

The history of PLEDGE shows continuous and rapid development. The company is registered in Qatar as a limited liability company under the name "Pledge Construction and Trading W.L.L." and specializes in design, comprehensive interior fit-outs, civil construction, carpentry, and electromechanical works.

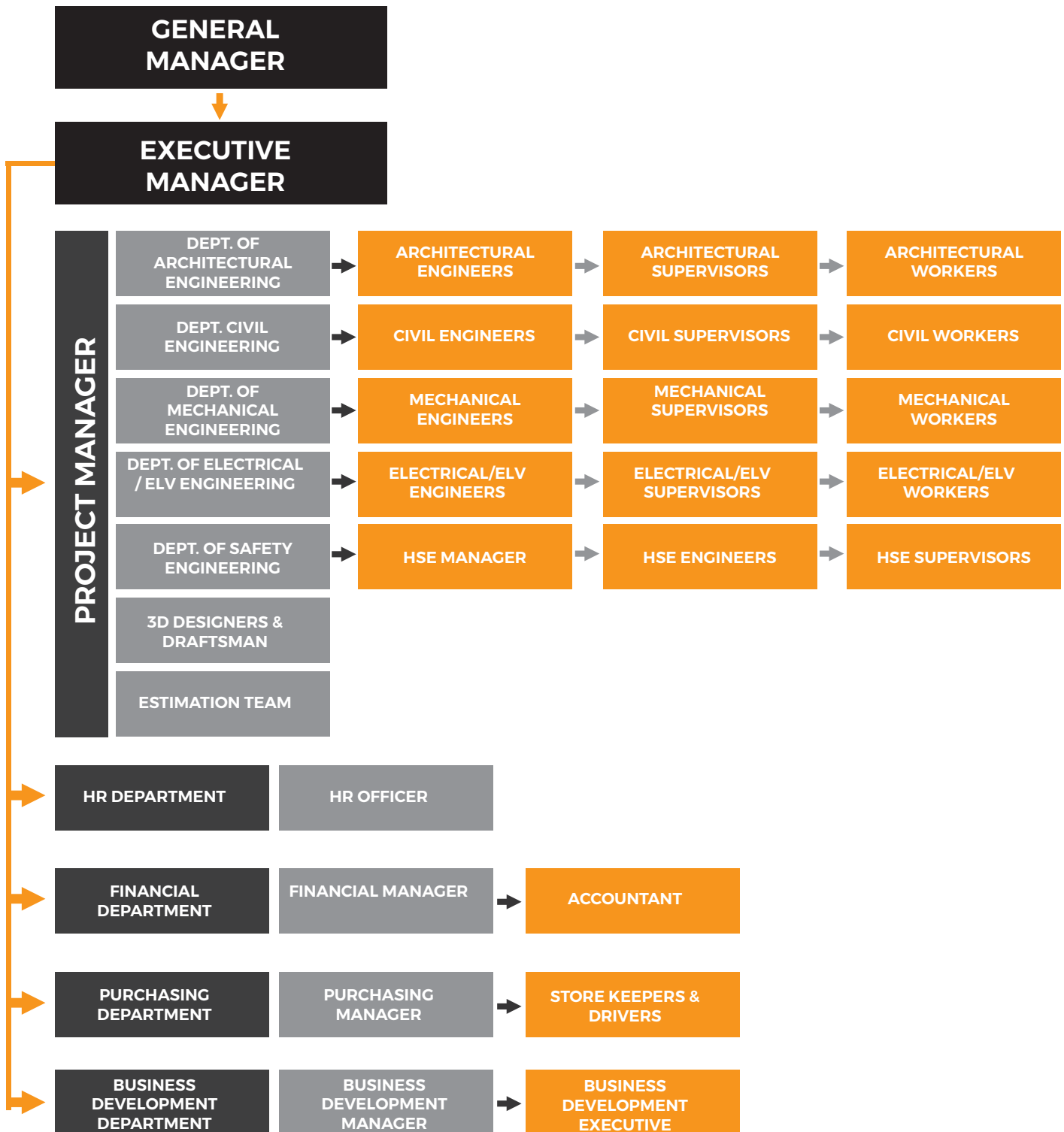
Our business is managed by our dedicated staff, managers, and executives under the supervision of the Board of Directors, chaired by Mr. Mohamed S. Abdul Rahman – the General Manager and founder of the trading group, comprising seven members, each acting as a director for their respective departments.

We have strong working relationships with most of the major companies in real estate, architecture, and project management.

We are committed not only to maintaining our track record of absolute delivery but also to ensuring a seamless handover to our clients by remaining engaged in the project even after its completion. We believe in transparency, acting as a competent contractor at all times, and keeping our clients and their representatives informed at all stages of the project.

We care about our employees and are committed to providing the safest working conditions.

Organisation Chart



Our Services



ARCHITECTURE & INTERIOR ARCHITECTURE

Our architecture responds to the needs and aspirations of our clients and communities. We give form and meaning to rooms, buildings, and landscapes—always balancing internal functions with external demands of site, climate and culture.



INTERIOR DESIGN & SPACE PLANNING

Our interior design teams study a client's business drivers and culture and create space that helps them flourish, researching alternatives, sharing knowledge and imagining new ways to solve the challenges.

By designing authentic, branded experiences that are seamlessly integrated into the architecture, we help our clients tell powerful stories, celebrate their culture and communicate their strategic messages.



FITOUT & TURNKEY SOLUTIONS

We offer centrally coordinated management of all procurement, installation, startup and commissioning of the products and systems required to implement unique projects. Whether you have single or multiple sites, we have the capabilities and the expertise to function as your single-source service provider.

Our project management team relieves you from the burden of multi-supplier coordination by serving as a single point of accountability for all technical.



SUPPLIES OF FINISHING MATERIALS, FURNITURE AND INTERIOR ITEMS

Whatever the setting, our designers select furniture and accessories that go well with the overall style and mood of a home.

The selection of furniture, lighting fixtures and interior elements that we offer, up to even lovely knick-knacks, is huge.

Our company has long been successfully cooperating with the best factories in China, Turkey, Italy, France, Belgium, Great Britain, Spain, Austria and Germany.

MEP SERVICES

We are leading integrated MEP service provider with over the years of experience in providing expert solutions for industrial, retail, hospitality, healthcare, fitness, commercial, residential and food and beverage.



ELECTRICAL SYSTEMS

As you decide who to hire for your next electrical project, we understand and we can help. we've solved many design puzzles over the years and electrical services are at the core of what we do best.

Our team has experience with many different kinds of electrical projects, and they will work efficiently and accurately to get the results you need. After years in the business we have an established reputation of quality and success.



MECHANICAL HVAC SYSTEMS

Our Mechanical HVAC Engineering services division offers industrial, commercial & domestic solutions for a wide variety of customers, partners and clients in public as well as private sector.



PLUMBING AND DRAIANCE SYSTEMS

Accomplishing great plumbing and drainage design means assembling a team that works on various aspects of your project while keeping multiple objectives in mind.



FIRE PROTECTION SYSTEMS

Specialized in the field of active fire protection system that offers safe and efficient products and services like fire alarm system, fire extinguishers, sprinkler systems & fire suppression systems.

Scope of Business

Starting, with personnel high qualified individuals in electro-mechanical and fit out technical experience. **PLEDGE** has set its sights on demanding many contracts since its inception.

The essence of **PLEDGE** today was defined by the range of its earliest projects, which included contracting, MEP for all types of constructions and real-estate consulting, engineering, installations, procurement, construction, testing & commissioning, as stipulated with the highest world modern standards for market facilities, and commercial properties in Qatar. **PLEDGE's** primary goal to meet customers, construction needs through quality work-man ship and successful relationships with business owners and the investors evidenced by our expanding base of Clients. **PLEDGE** offers national construction services, pre-constructed services, job site and project management, administrative support, and document control.

PLEDGE evaluates projects for constructability, provides cost estimates, helps maintain project scheduling, and works with owners to meet quality and time objectives.

PLEDGE can suggest cost effective means of construction and help select the best quality materials for each project at all Places in State of Qatar.

Current Position

The business is going in more than 14 years of operation. Operations are conducted from facilities located at different locations in Qatar. Values of projects increased nearly 63% between 2011 & 2024 and are expected to do the more than five times double in 2025 & 2026.

These healthy business environment increases are expected to be continued for next years and same growing rates.



Future Outlook

PLEDGE is focused on enhancing its technological capabilities and leveraging its expertise to offer leading solutions in 3D visualization design, construction, MEP engineering, fit-out engineering, and turnkey projects. The company's commitment to innovation and quality will drive its future growth.

PLEDGE's construction projects are expected to remain a major growth engine, with a current backlog exceeding 25 million Qatari Riyals over the next three years. The backlog, which started at 2 million Qatari Riyals, has grown eightfold over the past decade (2011-2024).

The company aims to replicate this success by increasing its workload, which currently stands at approximately 85 million Qatari Riyals. This will be achieved through enhanced technical capabilities, expanded human resources, and a stronger financial position, along with strategic joint ventures with reputable firms to support rapid growth and expansion.



Our Values

Excellence in Every Aspect – Delivering premium quality and performance through our deep expertise, efficiency, and meticulous attention to detail.

Exceptional Value – Providing outstanding value driven by our strong financial stability, extensive local knowledge, abundant resources, and technical expertise.

Constructive Partnerships – Building robust, long-lasting relationships with clients, customers, and partners based on trust, transparency, and tangible results.

Safety Focused – Prioritizing safety in every facet of our operations to ensure a secure working environment.

Global Standards with Local Sensitivity – Applying our expertise to set global standards while respecting and integrating local sensitivities. Committed to developing our people to meet international standards and to using local materials and suppliers.

Our Strengths

Our People – Our team comprises skilled professionals dedicated to delivering exceptional service. Their expertise, eagerness for knowledge, and passion for excellence, coupled with their loyalty and commitment, are key drivers of our success at Ledge Construction.

Our Resources – We possess the capital and resources that enable us to respond more swiftly than our competitors. Our efficient procurement systems allow us to manage material costs effectively and secure leading prices.

Our Experience – With over a decade of excellence and achievement, we have honed a unique ability to understand and address our clients' needs throughout the project lifecycle, thanks to our deep industry experience.

Our Investment Capacity – Our strong financial position, strategic partnerships, and relationships empower us to engage with clients as both investors and contractors. We have the capability to self-perform and explore new value opportunities.

Our Entrepreneurial Attitude – We have a robust appetite for investment and diversification, which drives our growth and expands our revenue streams.

Our Strategy

OUR strategy is CREATION, DEVELOPMENT & MODERNIZATION

We will work to deliver exceptional value for our partners by following a coherent and considered strategy:

- A.** Targeting large, complex construction projects in this emerging market.
- B.** Expanding investments in the value, productivity and downstream activities provided carefully.
- C.** Working in partnership with local and global leaders.
- D.** Investing in the best people and technologies.
- E.** Maintaining our commitment to quality and safety.
- F.** Being a good corporate citizen when/wherever we operate.
- G.** Providing products and services for people in developing economies.
- H.** Searching for new opportunities in order to deliver exceptional value.

Uniqueness & Differentiation

PLEDGE CONSTRUCTIONS AND TRADING W.L.L, will continue the uniqueness in the field of constructions, MEP and fit-outs to serve the national progress and development. As long as it was and still one of constructions and MEP contractors are trusted to carry out projects of the investment on a national scale. Whereas over the past ten years, the uniqueness of the company to engage in the implementation of more projects with different values , and the preference diversity projects between traditional and modern building theatres, hotels, hospitals, schools, educational centers and power stations.

The company utilizes the most modernist technology to enable it to not only provide competitive pricing but also for the monitoring of existing projects.

Through the use of an updated projects detail, **PLEDGE** can post pictures of current projects on its website. This allows customers to constantly monitor status of projects moment by moment. **PLEDGE** will continue to secure the uniqueness in the booming region, with focus on the national market place.

CAPABILITIES & POTENTIALS

THE POSSIBILITIES OF INTEGRATION AND DEVELOPMENT

The company is operating through an integrated framework of systems of work and integrated network of methods to secure **PLEDGE's** uniqueness and differentiation of the service by trustworthy long term agreement or by starting finance different branches of business such as transporting fleet, heavy equipment supplying, central air-conditioning duct fabrication, switchgears panels fabrication, installations and isolate workshops, MEP works components branded items and products and other related to our business which help and support our superiority in the market, reduce dependence on foreign market, preserves the company's uniqueness and speed in performance and quality assurance, through specialty in the work of constructions, MEP and fit-outs as well as units, departments and engineering design and technical installation up to turnkey.

BUSINESS DEVELOPMENT & GROWING LINES

BUSINESS PRINCIPLES

To build value, performance and leadership into **PLEDGE**, responsibility, respect and determination are key assuming responsibility, and acting with respect and determination makes it possible to nurture **PLEDGE's** traditional strengths - our style technology leadership, our pioneering spirit and our ability to be at home everywhere. That is our legacy, and our future. The key to success lies in how well all of us understand and apply the business principles - demonstrating personal, professional and corporate responsibility, showing respect for the views and needs of others and applying our shared determination to win the trust of our clients and make something in the future make us always in mind of our beneficiaries and outset of the construction business leaders.

POLICY OF QUALITY

Perfect teamwork to provide high quality product and services to our valuable customers as their requirements on time, every time.

OBJECTIVE

- A.** Quality checking at every stage.
- B.** To become zero complaint organization on our services on 2025-2026.
- C.** Immediate action upon customer complaints within 24hours.
- D.** Adoption of update knows for the enhancement of performance.
- E.** To create and maintain a culture of quality within the group.
- F.** To ensure that all our employees are trained in quality assurance and that this training is ongoing at all levels.
- G.** To meet all legal requirements.
- H.** To provide the resource necessary to achieve the required level of quality.
- I.** To provide documentary evidence of all quality control measures.
- J.** To continually review, improve and implement quality control and best practice procedures.
- K.** To seek feedback from our clients as to the level of quality delivered.

POLICY OF SAFETY

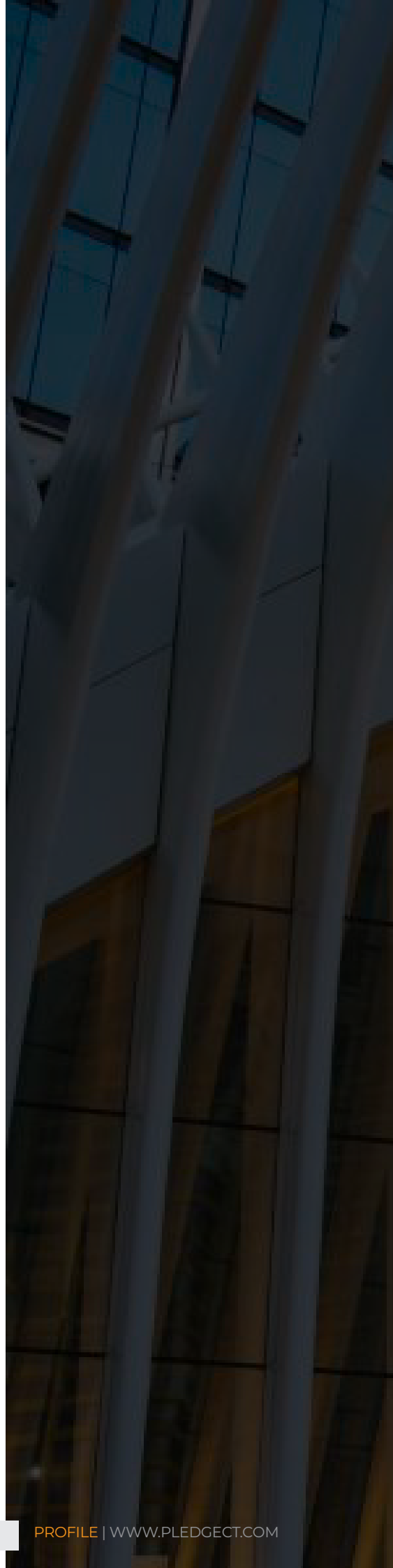
Ensure the education, interest awareness training of new employees in safe working methods before the assumption of duty.

Ensure that the organization is a safe place, and the environment, facilities, equipment and substances are subject to safe system of work to prevent risks to health or safety.

Promote personal responsibility and effort on the part of everyone to avoid and prevent health hazards and injuries to themselves and to others who may be affected by their acts or omissions and to co-operate with the organization to comply with its duties, requirements and statutory obligations.

Ensure the use of defensive driving techniques by car drivers and machinery operators. Ensure that the safety is a line management responsibility. Monitor effectiveness of safety policy.

Display and publicize this statement and review it at least by annually.



OUR CERTIFICATES



CERTIFICATE

This is hereby certified that the Environmental Management System of

Pledge Construction and Trading W.L.L.

Flat No. 3, Floor No. 2, Suhaim Tower Building No. 103, Al Sadd Street No. 231,
Zone No. 38, Doha - Qatar. P.O. Box: 38495, Doha - Qatar.

Has been found to comply with the requirements of

ISO 14001: 2015

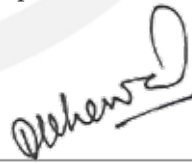
This certificate is applicable for the following scope:

Trading in ceramic tiles, marble, Trading in lighting tools and equipment's, Trading in home furniture and furnishings, Building materials trade, General construction (general contracting), Electrical contracts, and Mechanical contracts.

Certificate Number: KAEM202409016

Date of initial registration:	10 September 2024
Surveillance audit on/before:	05 August 2025
Certificate expiry:	05 September 2025
Recertification due:	04 September 2027




Authorized Signatory
KVQA Assessment Pvt. Ltd.

MANAGEMENT SYSTEM CERTIFICATE

Website: www.iso-registration.com | Email: info@iso-registration.com

KVQA Assessment Private Limited is accredited to United Accreditation Foundation (UAF). UAF is internationally recognized by having a signatory status across multilateral recognition arrangement of International Accreditation Forum (IAF) and Asia Pacific Accreditation Cooperation (APAC).

The certificate is valid subject to successful completion of surveillance audits. Verify validity/status on www.iso-registration.com or on email at info@iso-registration.com

UAF address: 400, North Centre Dr, STE 202, Norfolk, VA23502, United States of America

OUR CERTIFICATES



CERTIFICATE

This is hereby certified that the Occupational Health & Safety Management System of

Pledge Construction and Trading W.L.L.

Flat No. 3, Floor No. 2, Suhaim Tower Building No. 103, Al Sadd Street No. 231,
Zone No. 38, Doha - Qatar. P.O. Box: 38495, Doha - Qatar.

Has been found to comply with the requirements of

ISO 45001: 2018

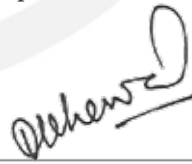
This certificate is applicable for the following scope:

Trading in ceramic tiles, marble, Trading in lighting tools and equipment's, Trading in home furniture and furnishings, Building materials trade, General construction (general contracting), Electrical contracts, and Mechanical contracts.

Certificate Number: KAOH202409016

Date of initial registration:	10 September 2024
Surveillance audit on/before:	05 August 2025
Certificate expiry:	05 September 2025
Recertification due:	04 September 2027




Authorized Signatory
KVQA Assessment Pvt. Ltd.

Website: www.iso-registration.com | Email: info@iso-registration.com

KVQA Assessment Private Limited is accredited to United Accreditation Foundation (UAF). UAF is internationally recognized by having a signatory status across multilateral recognition arrangement of International Accreditation Forum (IAF) and Asia Pacific Accreditation Cooperation (APAC).

The certificate is valid subject to successful completion of surveillance audits. Verify validity/status on www.iso-registration.com or on email at info@iso-registration.com

UAF address: 400, North Centre Dr, STE 202, Norfolk, VA23502, United States of America

OUR CERTIFICATES



CERTIFICATE

This is hereby certified that the Occupational Health & Safety Management System of

Pledge Construction and Trading W.L.L.

Flat No. 3, Floor No. 2, Suhaim Tower Building No. 103, Al Sadd Street No. 231,
Zone No. 38, Doha - Qatar. P.O. Box: 38495, Doha - Qatar.

Has been found to comply with the requirements of

ISO 45001: 2018

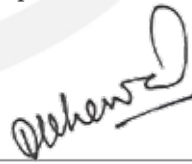
This certificate is applicable for the following scope:

Trading in ceramic tiles, marble, Trading in lighting tools and equipment's, Trading in home furniture and furnishings, Building materials trade, General construction (general contracting), Electrical contracts, and Mechanical contracts.

Certificate Number: KAOH202409016

Date of initial registration:	10 September 2024
Surveillance audit on/before:	05 August 2025
Certificate expiry:	05 September 2025
Recertification due:	04 September 2027




Authorized Signatory
KVQA Assessment Pvt. Ltd.

Website: www.iso-registration.com | Email: info@iso-registration.com

KVQA Assessment Private Limited is accredited to United Accreditation Foundation (UAF). UAF is internationally recognized by having a signatory status across multilateral recognition arrangement of International Accreditation Forum (IAF) and Asia Pacific Accreditation Cooperation (APAC).

The certificate is valid subject to successful completion of surveillance audits. Verify validity/status on www.iso-registration.com or on email at info@iso-registration.com

UAF address: 400, North Centre Dr, STE 202, Norfolk, VA23502, United States of America



OUR PROJECTS

PROJECTS IN QATAR

List of Projects in Qatar

Project Name	Client	Scope of Work
American Express Middle East Office, Units No. (Q03.00: F.01 & Q03.01: F.02) in Level 00 & Level 01 Floors Level @ Msheireb, Building Q03.	AMEX (MIDDLE EAST) B.S.C. (C)	Full MEP & fitout works
Tender Loving Care Nursery (TLC), Units No. 01, 02 & 03 @ Msheireb, Building R06.	Tender Loving Care Nursery (TLC)	Full MEP & fitout works
Prime London, Unit No. GW209 – Ground Floor – Doha Festival City.	Prime London Design & Haute Couture Trading	Full MEP & fitout works
HED Warehouse Refurbishment and Internal Modifications at Buildings B2 & B5, Street 5, Industrial Area.	Mannai Trading Company W.L.L.	Refurbishment and Internal Modifications
Kinto Car Rental Service Branch, Ground Floor, City Center Mall, West Bay, Qatar.	Al Abdulghani Motors (AAM)	Full MEP & fitout works
Toyota Service Center Umm Suwayya Al Khor, Qatar.	AL Abdulghani Motors (AAM)	Fitout works
Al Thumama ESC: Customer Service and Reception Area, Combined Shop 1, 2 & 3, Building No. 279, Street No. 351, Zone No. 50 @ Al-Thumama.	AL Abdulghani Motors (AAM)	Design and build
Al Thumama ESC: Workshop No. 3 - "Quick Service Center for Lexus" in Ground Floor Level, Building No. 269, Street No. 351, Zone No. 50 @ Al-Thumama.	AL Abdulghani Motors (AAM)	Design and build
Al Thumama ESC: Workshop No. 4 - "Lexus Workshop" in Ground Floor Level, Building No. 273, Street No. 351, Zone No. 50 @ Al-Thumama.	AL Abdulghani Motors (AAM)	Design and build
Al Ahli Hospital.	Al Ahli Hospital	General Maintenance Works (Civil, Arch. & MEP)
Ebn Sina Medical Warehouse @ Industrial Area, St. 41, Gate 22.	Ebn Sina Medical	General Maintenance Works (Civil, Arch. & MEP)

List of Projects in Qatar

Project Name	Client	Scope of Work
Proposed 2 Villas (G+1+PH) with 2 Ancillary Building, Plot No. 10, Street No. 1096, Zone No. 270 @ Rawdat Al Hamama.	General Authority for Minors Affairs – State of Qatar / Mr. Nayef Abdulaziz E H Al-Eshaq	Turnkey
Private Villa, Plot No. 24, Street No. 81, Zone No. 56 @ Umm Al Seneem, Ain Khaled.	General Authority for Minors Affairs – State of Qatar / Mr. Khalid Mubarak A N Al-Nasr	Turnkey
Ebn Sina Pharmacy, Unit No. C032 @ City center.	Ebn Sina Medical / Ebn Sina Pharmacy	Design and build
Gulf Laboratories Refurbishment, St 13, Salwa Industrial Area.	Gulf Laboratories Co. W.L.L. - Mannai Corporation QPSC	Refurbishment
Toyota & Lexus Business Department for Al Abdulghani Motors (AAM) @ 7th Floor of Al-Abdulghani Motors Tower.	AL Abdulghani Motors (AAM)	Full MEP & fitout works
Toyota & Lexus Motor Sport Department for Al Abdulghani Motors (AAM) @ 3rd Floor of Abdulghani Motors Tower.	AL Abdulghani Motors (AAM)	Full MEP & fitout works
Mannai Light Structure Car Shades on Roof Floor in an Existing Car Park Building (G + M + 1 + Roof) and Proposed Internal Modifications, Street 105, Al Wakalat Street, Zone 57 Industrial Area.	Mannai Trading Company W.L.L.	Parking Shades
EVE Medical Clinic at Units No. 12 (2F-12-01) & 13 (2F-13-01) for in Second Floor Level at Building SB4 @ West Walk, Al Sidr Street, Al Waab.	Dr. Haya Al Mannai	Full MEP & fitout works
Ashley HomeStore La punta Qatar @ AlMarkhiya / khalifa St, Opposite Al Jazeera Channel building.	Midas International Company Qatar W.L.L.	Fitout works
Drinking Water Fountains @ MIA Park, Doha Corniche.	Qatar Muesuems (Meusem of Islamic Arts) / FMM - Facilities Management and Maintenance Company, L.L.C (FMM)	Full MEP & civil works
Ebn Sina Pharmacy W.L.L. @ Mansour Building, Bldg. No.11/ Wadi Al Gaeya Street No.148/Zone No.:69, Unit No. U059, in Ground Floor @ Mansour Building – Lusail City.	Ebn Sina Medical / Ebn Sina Pharmacy	Design and build
Geely Car Showroom in Ground & Mezzanine Floors Level @ Existing Building (Commercial & Residential) Salwa Road. Mainly Mercantile, Storage & Business Occupancy.	Pastels for Fashion and Beauty	Full MEP & fitout works

List of Projects in Qatar

Project Name	Client	Scope of Work
Wycon Cosmetics, Unit No. GF134 at Mall of Qatar	Pastels for Fashion and Beauty	Full MEP & fitout works
Garden By Belgravia Restaurant, Unit No. FE543, First Floor @ Doha Festival City-Al Ebb Area-Umm Slal Mohammed-Qatar.	Garden By Belgravia Restaurant	Full MEP & fitout works
Eva France, Unit No. GF128 - Ground Floor – Mall of Qatar.	Eva France	Full MEP & fitout works
Be Fit Shop, Unit No. FF-0110 - First Floor @ Mall of Qatar.	AKI Fitness Trading	Full MEP & fitout works
Prime London, Unit No. GF0022 - Ground Floor – Mall of Qatar.	Prime London Design & Haute Couture Trading	Design and build
Fratelli Diamanti Parfum Milano, Unit No. GF010 - Ground Floor – Mall of Qatar.	Mr. Rashid Mohammed R S Al-Khayareen	Design and build
Fratelli Diamanti Parfum, Unit No. FF104, First Floor @ Place Vendome Mall.	Mr. Rashid Mohammed R S Al-Khayareen	Design and build
Fratelli Diamanti Parfum, Unit No. C06, Ground Floor, Galleria Mall @ Msheireb Downtown Doha.	Mr. Rashid Mohammed R S Al-Khayareen	Design and build
C-House Café (GF053A), Ground Floor @ Mall of Qatar.	C House Milano	Full MEP & fitout works
Aimee's Café, Unit No. FF054, First Floor @ Place Vendome Mall.	Mr. Rashid Mohammed R S Al-Khayareen	Design and build
Vetro, Unit No. U-01/07-01, Ground Floor - Galleria Mall @ Msheireb Downtown Doha.	Mr. Rashid Mohammed R S Al-Khayareen	Design and build
La Luce Restaurant, Basement & Ground Floors, Building No. 61 @ Aspire Zone. "1,300 SQM"	Mr. Dhafer Ali H M Al-Hebabi, Mr. Awash Ayed M A Al-Qhtani & Mr. Delaim Hassan D A Al-Qahtani	Design and build
Chry Chry Café, Unit No. GF-GAL.08, Ground Floor @ Mixed Use Building Commercial Boulevard – Lusail.	Mr. Rashid Mohammed R S Al-Khayareen	Full MEP & fitout works
Fiko Restaurant, Unit No. 121.00: C.02 in Ground, Attic Slab & Mezzanine Floors @ Msheireb Downtown Doha.	Badr Contracting & Trading	MEP works
Hoppers Restaurant, Unit No. 41 + Part of Unit 129 into Unit 121 GF 2062B for Hoppers for Restaurant + Adding Internal Mezzanine in round Floor Level @ Msheireb Downtown.	Badr Contracting & Trading	MEP works

List of Projects in Qatar

Project Name	Client	Scope of Work
Additional Out Majlis for Existing Villa 74, St 642, Zone 56 – Abo Hamour.	Mr. Mohammed Mubarak	Design and build
Voute Café, Unit No.2 @ MIA Park, Doha Corniche.	Qatar Muesuems (Meusem of Islamic Arts)	Design and build
Moons Café @ MIA Park Zone 3, Doha Corniche.	Qatar Muesuems (Meusem of Islamic Arts)	Design and build
Barzan Prep Independent School for Girls - Umm Salal, Qatar.	Qasr Al Andalus Co.W.L.L	False ceiling works
Rouda Bint Mohamed Secondary Girls - Umm Salal, Qatar.	Qasr Al Andalus Co.W.L.L	False ceiling works
ISF - Duhail, Qatar.	Qasr Al Andalus Co.W.L.L	False ceiling works
Cluster Project At QDP.	Alghanim International-Qatar	Fitout works
Lu Café, Unit No C24B – Ground Floor - Lagoona Mall.	Mr. Mohammed Atiq F B Al-Hamad	Design and build
Lily House Café, Kitchen Unit G165A- Ground Floor – Mall of Qatar.	Mr. Rashid Mohammed R S Al-Khayareen	Full MEP & fitout works
Lily House Café, Kiosk Unit G165- Ground Floor – Mall of Qatar.	Mr. Rashid Mohammed R S Al-Khayareen	Full MEP & fitout works
Z Café - Aspire Park – Aspire Zone.	Mr. Awash Ayed M A Al-Qahtani	3d designing
974 Restaurant - Muither Branch	Mr. Mohammed Elneamy	Design and build
G+1 Villa + Out Kitchen, Out Majlis, Guard Room & S. Pool – Ain Khalid.	Mr. Abdul Aziz Al-Mahmoud	Full MEP & fitout works
Al Akeel Restaurant & Café - Mushaireb Area, Near Doha Oasis.	Mr. Abdul Aziz Abdullah Al-Haydous	Design and build
G+1+PH Villa + Out Kitchen & Out Majlis – Ain Khalid.	The heirs of the essence of Ismail Al Suwaidi	Electrical works & false ceiling works
Tawasol Offices - 5th Floor- AlKhaleej Takaful Insurance Tower - Grand Hamad Street.	The Glown Company	Design and build

List of Projects in Qatar

Project Name	Client	Scope of Work
Graze Restaurant, BGF-F 01, in Ground Floor, at Palm Tower-B.	Interprogetti Company	Full MEP & fitout works
Spyra Salon & SPA - Villa No.19 - Al Thumama.	The Glown Company	Design and build
Rosemary Restaurant Shop No.: GF: 01&02 in (G+F) Floors - Al Hazm Mall.	Interprogetti Company	Full MEP & fitout works
Flat White Coffee Shop Unit No.16551 in Ground Floor @ Qatar Foundation.	Interprogetti Company	Full MEP & fitout works
Ridge La Cuisine Restaurant, Unit No. B3G06 in Ground Floor @ Al Hazm Mall.	Interprogetti Company	Full MEP & fitout works
Proposed Store Room of Ridge Restaurant, Unit No. UB/S-30 in Upper Basement Floor of Al Hazm Mall.	Interprogetti Company	Full MEP works
Walter's cafe in Ground Floor @ Twin Towers, Lusail City.	Interprogetti Company	Full MEP & fitout works
Dirawandi Restaurant Unit No. T10 in Third Floor - Tawar Mall.	Interprogetti Company	Fitout works
Occhiali Shop No. F69 in First Floor – Tawar Mall.	Interprogetti Company	Fitout works
Liberty Suites Hotel – Bin Mahmoud.	Liberty Suites Hotel	General maintenance works
World Wonder Burgers, Unit No. 168, QQ 07 – The Pearl.	Interprogetti Company	Fitout works
Yateem Optician Shop No: M-50 - Al Mirqab Mall.	Interprogetti Company	Full MEP & fitout works
Yateem Optician Head Offices No.2, 3 & 4 in Fourth Floor of Al Qamra Commercial Building - Al Saad Street.	Interprogetti Company	Full MEP & fitout works
Yateem Optician Shop No: CW049 in Ground Floor – Doha Festival City.	Interprogetti Company	Full MEP & fitout works
Attila Mongolian Grill Unit No: FE-566B in First Floor – Doha Festival City.	Interprogetti Company	Full MEP & fitout works
Tuc Tuc Shop No: EE-01A in First Floor - Lagoona Mall.	United Business Development.	Full MEP & fitout works

List of Projects in Qatar

Project Name	Client	Scope of Work
Eureka Kids Shop No.: EE-10 in First Floor - Lagoona Mall.	United Business Development.	Full MEP & fitout works
Renault Showroom - Salwa Road.	Marmi Engineering Company.	Fitout works
Man'oushe Street Restaurant in Woqood Petrol Station -Al Khor.	United Business Development.	Full MEP & fitout works
Al Rashedy Clothes - Shop No. (11&12) in Ground Floor - Q-Mall, Al Charafa.	Marmi Engineering Company.	Full MEP & fitout works
Fitout works for Swimming Pool Area & GYM Area in Existing 3 Palaces – Charrafa.	Sheikh Abdulaziz Al Thani	Full MEP & fitout works
VIP Majlis – Al Khor Beach.	Sheikh Abdulaziz Al Thani	Full MEP & fitout works
Health Center – Muither.	Qasr Al Andalus Co.W.L.L	Installations work of false ceiling
(B+G+1+PH) Villa & Out Blocks in Al Nasr Street.	Mr. Hamad Abdulla Al-Sulaiti.	Electrical works
Proposed 3 Villas + Swimming Pool in Al-Khor.	Waves International Co.	Electrical works
Al Tahara Car Wash – Industrial Area.	Mr. Ahmed Gouda	Electrical works
8 Nos. of Qatar Schools in Al Daayen, Smaisima, Um Slal Mohammed, Um Slal Ali & Al Khor Areas.	Tarsheed, the National Program for Conservation and Energy Efficiency launched by (KAHRAMAA).	Installation of new energy efficient LED lamps existing inefficient lamps. existing inefficient lamps.
(G+1+PH+Out Blocks) Villa & Swimming Pool in Um Elseneem.	Mr. Mohammed Talib Sabir	Full MEP & fitout works + panoramic elevator
B+G+3F+PH Residential Apartments Building (4 Flats in every floor) at Al Khor.	Samid Contracting & Trading Co.	Electrical works
G+3F+PH Residential Apartments Building (5 Flats in every floor) at Al Khor.	Samid Contracting & Trading Co.	Electrical works
Iron Industries Factory (Labour+Office Buildingin & 3 Nos. of Workshops) in New Industrial Area.	Khalid Iron Industries./Khalid Ahmed Al-Thani.	Electrical works
Al Tamimi Law Firm Offices at Al Jazeera Tower.	Al Tamimi	Full MEP & fitout works

List of Projects in Qatar

Project Name	Client	Scope of Work
Al Dhakira Package Sewage Treatment Plant (PTP) Upgrades at Existing Al Dhkira Site.	Alghanim International-Qatar/ Public Works Authority 'Ashghal'.	Electrical works
Al Shamal Package Sewage Treatment Plant (PTP) Upgrades at Existing Al Shamal Site.	Alghanim International-Qatar/ Public Works Authority 'Ashghal'.	Electrical works
Modifications of 3 Villas in Abo Hamour.	Waves International Co.	Electrical upgrade works
(G+1+PH) Villa & Out Blocks in Al Saliya.	Qualios Co.	Electrical works
4 Nos. of Villas in Smaisima.	Afifi for Trading and Contracting Co.	Electrical works
(G+1+PH) Villa & Out Majlis in Al Rayyan.	Afifi for Trading and Contracting Co.	Electrical works
(G+1+PH) Villa & Out Majlis in Al Murrah.	Afifi for Trading and Contracting Co.	Electrical works
Proposal to add First Floor for Existing Villa in Um Slal Mohamed.	Afifi for Trading and Contracting Co.	Electrical works
Proposal to add First & P-House Floor for Existing Villa in Al Wakra.	Afifi for Trading and Contracting Co.	Electrical works
(G+1+PH) Villa & Out Blocks in Al Wukair.	Afifi for Trading and Contracting Co.	Electrical works
8 Nos. of (G+1+P Villa)+Out Blocks in Al Waab.	Mr. Abdulla Hijji Al-Sulaiti.	Electrical works
12 Nos. of (G+1+P Villa)+Out Blocks in Um Al Amad.	Qatar Development Trading & Contracting.	Electrical and plumbing works
4 Nos. of (G+1+P Villa) + Out Blocks in A Zekret Street.	Qatar Development Trading & Contracting.	Electrical works
(G+1+PH) Villa & Out Majlis in Al Rayyan.	Mr. Abdulla Anbar	Electrical works
Construction of 69 Villas at umm lekhba.	Qatar Infrastructure Co.	Electrical works
Paris Gallery Located at Ground Floor – Ezdan Mall – Gharafa.	Design Plus	False ceiling & glass works

2. Tender Loving Care Nursery (TLC)

Units No. 01, 02 & 03 - Msheireb, Building R06



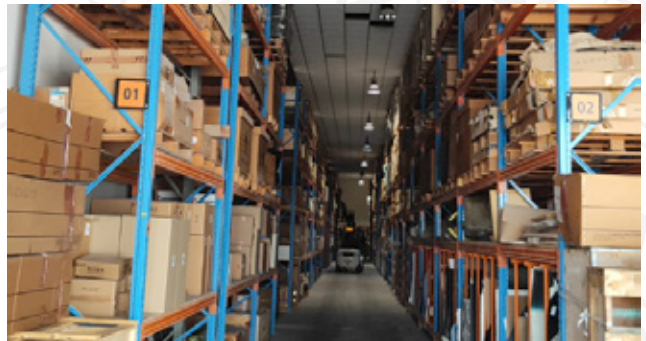
3. Prime London

Unit No. GW209 - Ground Floor - Doha Festival City



4. HED Warehouse Refurbishment and Internal Modifications

Buildings B2 & B5, Street 5, Industrial Area



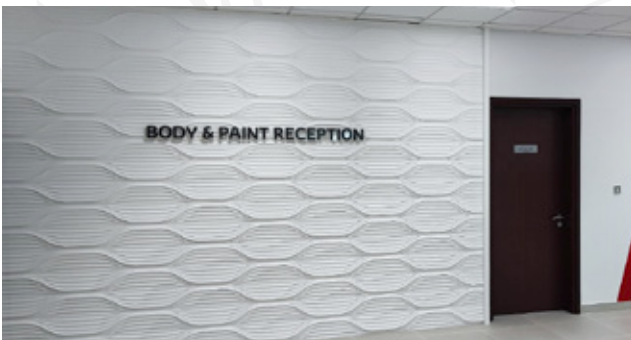
5. Kinto Car Rental Service Branch

Ground Floor, City Center Mall, West Bay, Qatar



6. Toyota Service Center

Umm Suwayya Al Khor, Qatar



7. Al Thumama ESC Customer Service and Reception Area

Combined Shop 1, 2 & 3, Building No. 279, Street No. 351,
Zone No. 50 - Al-Thumama



8. Al Thumama ESC Workshop No. 3 - Quick Service Center for Lexus

Ground Floor Level, Building No. 269, Street No. 351, Zone No. 50
- Al-Thumama



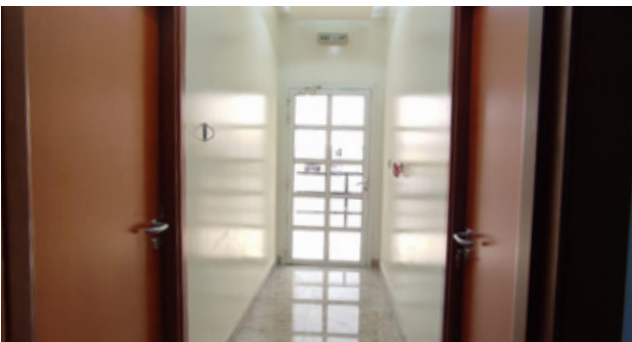
9. Al Thumama ESC Workshop No. 4 - Lexus Workshop

Ground Floor Level, Building No. 273, Street No. 351, Zone No. 50 - Al-Thumama



10. Ebn Sina Medical Warehouse

Industrial Area, St. 41, Gate 22



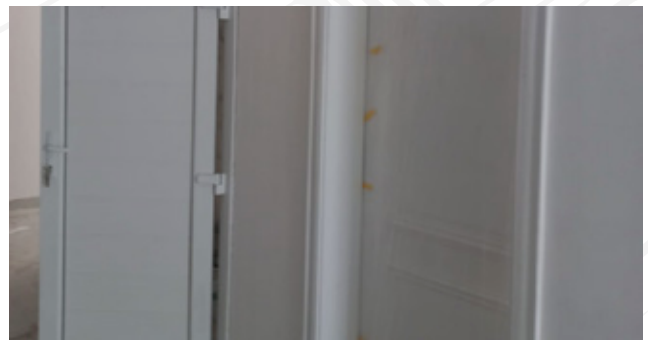
11. Proposed 2 Villas (G+1+PH) with 2 Ancillary Building

Plot No. 10, Street No. 1096, Zone No. 270 at Rawdat Al Hamama



12. Private Villa

Plot No. 24, Street No. 81, Zone No. 56 @ Umm Al Seneem, Ain Khaled



13. Ebn Sina Pharmacy

Unit No. G032 - City center



14. Gulf Laboratories Refurbishment

Street 13, Salwa Industrial Area



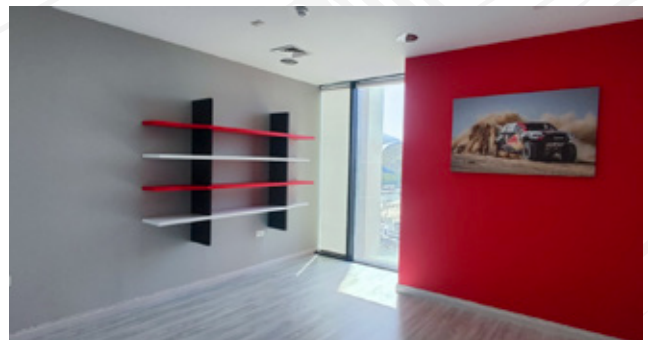
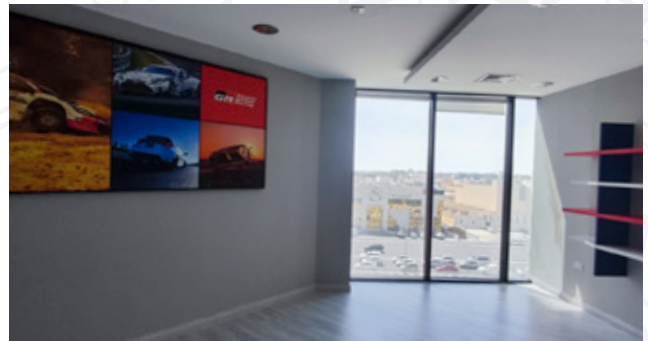
15. Toyota & Lexus Business Department for Al Abdulghani Motors

7th Floor of Al-Abdulghani Motors Tower



16. Toyota & Lexus Motor Sport Department for Al Abdulghani Motors

3rd Floor of Abdulghani Motors Tower



17. Mannai Light Structure Car Shades on Roof Floor in an Existing Car Park Building

(G + M + 1 + Roof) and Proposed Internal Modifications, Street 105, Al Wakalat Street, Zone 57 Industrial Area



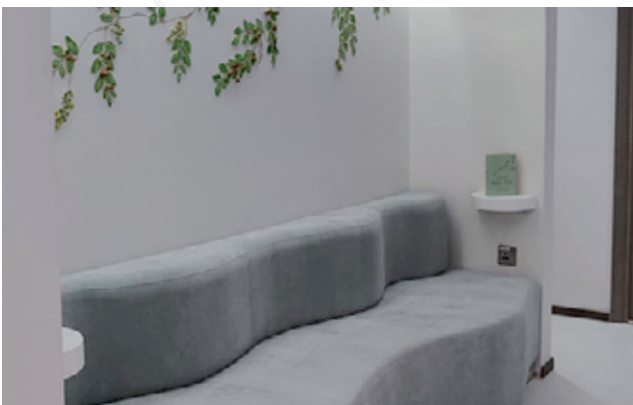
18. Ashley HomeStore La punta Qatar

AlMarkhiya khalifa St, Opposite Al Jazeera Channel building



19. EVE Medical Clinic

Units No. 12 (2F-12-01) & 13 (2F-13-01) for in Second Floor Level at Building SB4 - West Walk, Al Sidr Street, Al Waab



20. Drinking Water Fountains

MIA Park, Doha Corniche



21. Ebn Sina Pharmacy W.L.L.

Mansour Building, Bldg. No.11 Wadi Al Gaeya Street No.148 Zone No.69,
Unit No. U059, in Ground Floor @ Mansour Building - Lusail City



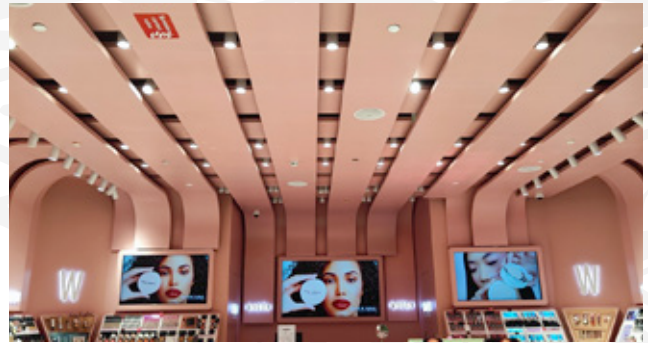
22. Geely Car Showroom

Ground & Mezzanine Floors Level @ Existing Building (Commercial & Residential) Salwa Road. Mainly Mercantile



23. Wycon Cosmetics

Unit No. GF134 - Mall of Qatar



24. Garden By Belgravia Restaurant

Unit No. FE543, First Floor @ Doha Festival City-Al Ebb Area- Umm Slal Mohammed-Qatar



25. Eva France

Unit No. GF128 - Ground Floor - Mall of Qatar



26. Be Fit Shop

Unit No. FF-0110 - First Floor - Mall of Qatar



27. Prime London

Unit No. GF0022 - Ground Floor - Mall of Qatar



28. Fratelli Diamanti Parfum Milano

Unit No. GF010 - Ground Floor - Mall



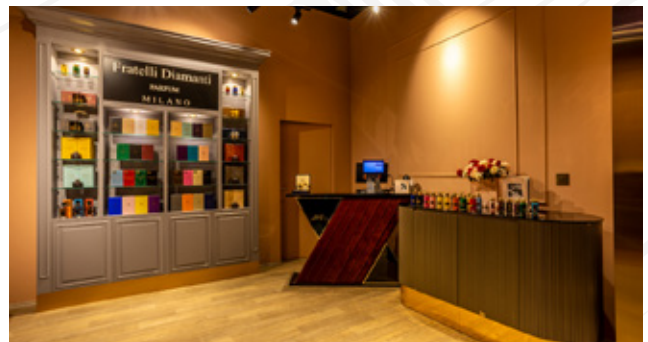
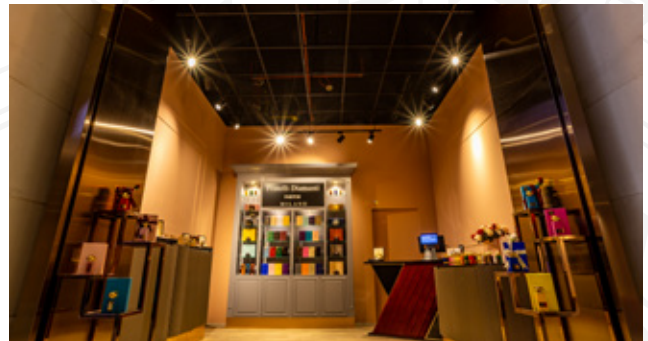
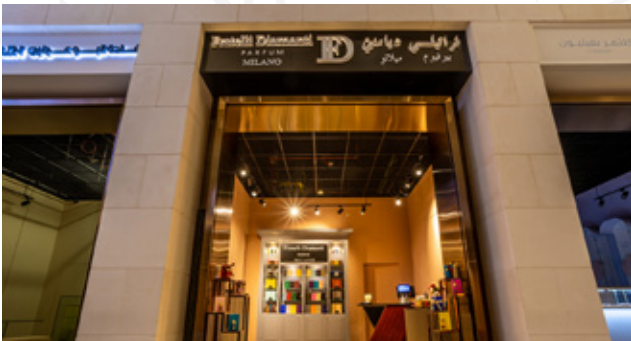
29. Fratelli Diamanti Parfum

Unit No. GF0022 - Ground Floor - Mall of Qatar



30. Fratelli Diamanti Parfum

Unit No. G06, Ground Floor, Galleria Mall @ Msheireb Downtown Doha



31. C-House Café (GF053A)

Ground Floor - Mall of Qatar



32. Aimee's Café

Unit No. FF054, First Floor - Place Vendome Mall



33. Vetro

Unit No. U-0107-01, Ground Floor - Galleria Mall - Msheireb Downtown Doha



34. La Luce Restaurant

Basement & Ground Floors, Building No. 61 @ Aspire Zone. "1,300 SQM



35. Chry Chry Café

Unit No. GF-GAL.08, Ground Floor @ Mixed Use Building
Commercial Boulevard - Lusail



36. Fiko Restaurant

Unit No. 121.00 C.02 in Ground, Attic Slab & Mezzanine Floors - Msheireb
Downtown Doha



37. Hoppers Restaurant

Unit No. 41 + Part of Unit 129 into Unit 121 GF 2062B for Hoppers for Restaurant + Adding Internal Mezzanine in Ground Floor Level - Msheireb Downtown



38. Additional Out Majlis for Existing Villa 74

Street 642, Zone 56 - Abo Hamour



39. Voute Café

Unit No.2 @ MIA Park, Doha Corniche



40. Moons Café

MIA Park Zone 3, Doha Corniche



41. Cluster Project

QDP



42. Lu Café

Ground Floor - Unit No C24B - Ground Floor - Lagoon Mall



43. Lily House Café

Kitchen Unit G165A- Ground Floor - Mall of Qatar



44. Lily House Café

Kiosk Unit G165- Ground Floor - Mall of Qatar



45. Z Café

Aspire Park - Aspire Zone



46. 974 Restaurant

Muithier Branch



47. G+1 Villa + Out Kitchen, Out Majlis, Guard Room & S. Pool

Ain Khalid - Mr. Abdul Aziz Al-Mahmoud



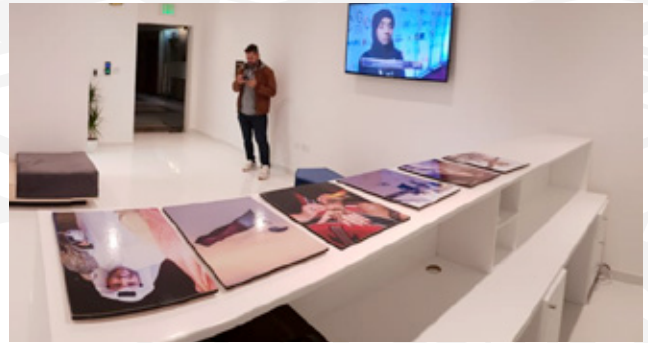
48. Al Akeel Restaurant & Café

Mushaireb Area, Near Doha Oasis



49. Tawasol Offices

5th Floor- AlKhaleej Takaful Insurance Tower - Grand Hamad Street



50. Graze Restaurant

BGF-F 01, in Ground Floor, at Palm Tower-B



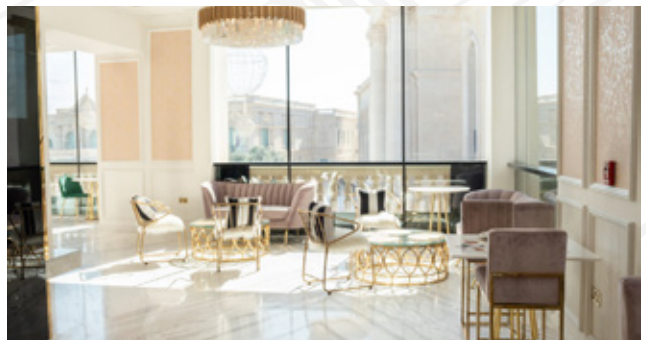
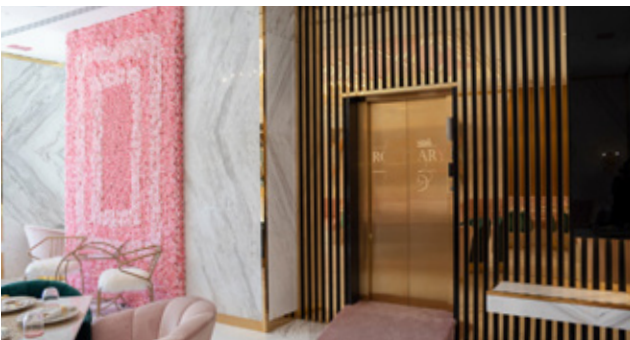
51. Spyra Salon & SPA

Villa No.19 - Al Thumama



52. Rosemary Restaurant

Shop No. GF 01&02 in (G+F) Floors - Al Hazm Mall



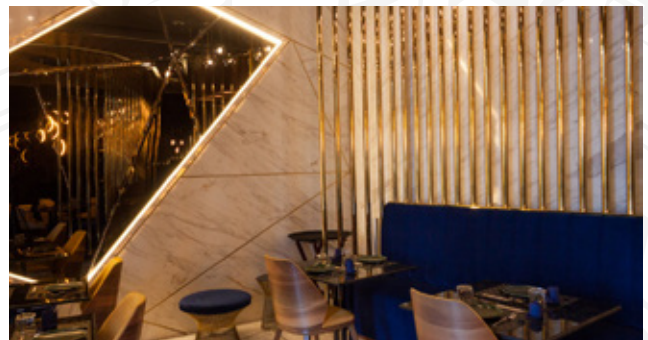
53. Flat White Coffee

Shop Unit No.16551 in Ground Floor - Qatar Foundation



54. Ridge La Cuisine Restaurant

Unit No. B3G06 in Ground Floor - Al Hazm Mall



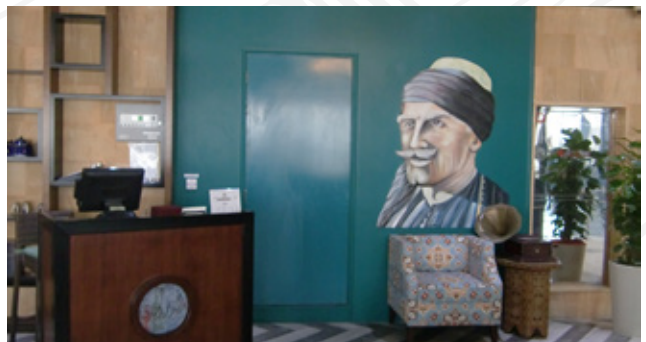
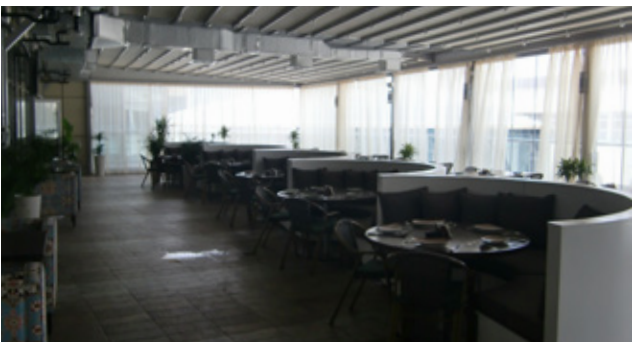
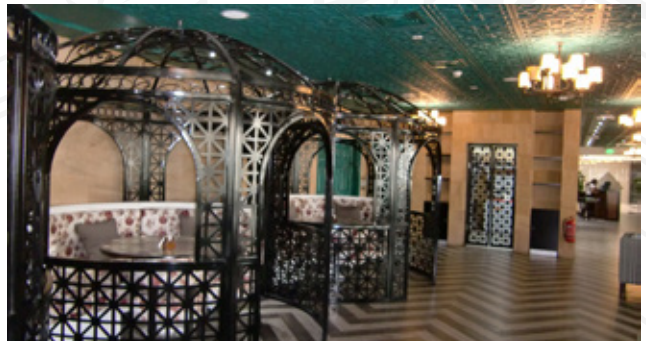
55. Walter's cafe

Ground Floor Twin Towers, Lusail City



56. Dirawandi Restaurant

Unit No. T10 in Third Floor - Tawar Mall



57. Occhiali Shop

No. F69 in First Floor – Tawar Mall



58. Yateem Optician

Shop No M-50 - Al Mirqab Mall



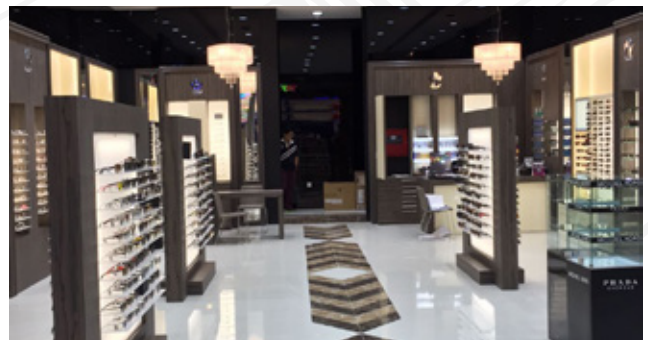
59. Yateem Optician Offices

Offices No.2, 3 & 4 in Fourth Floor of Commercial Building - Al Saad Street



60. Yateem Optician Shop

Shop No GW049 in Ground Floor - Doha Festival City



61. Attila Mongolian Grill

Unit NoFE-566B in First Floor - Doha Festival City



62. Tuc Tuc Shop

Shop No EE-01A in First Floor - Lagoona Mall



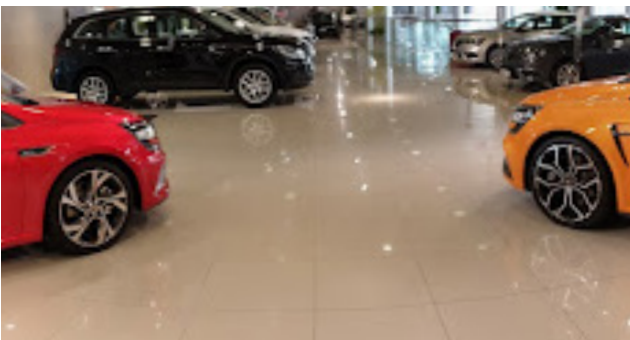
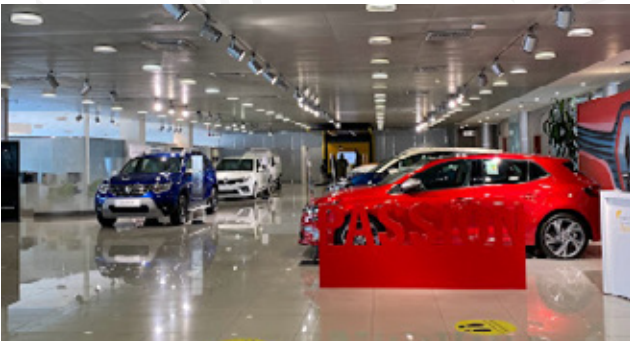
63. Eureka Kids Shop

Shop No. EE-10 in First Floor - Lagoona Mall



64. Renault Showroom

Salwa Road



65. Man'oushe Street Restaurant

Woqood Petrol Station -Al Khor



66. Al Rashedy Clothes

Shop No. (11&12) in Ground Floor - Q-Mall, Al Gharafa



67. VIP Majlis

Al Khor Beach



68. Proposed 3 Villas + Swimming Pool

Al-Khor



69. Al Tahara Car

Industrial Area



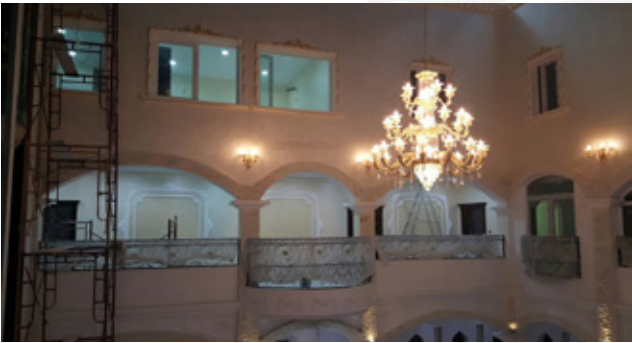
70. 8 Nos. of Qatar Schools

Al Daayen, Smaisima, Um Slal Mohammed, Um Slal Ali & Al Khor Areas



71. (G+1+PH+Out Blocks) Villa & Swimming Pool

Um Elseneem - Mr. Mohammed Talib Sabir



72. B+G+3F+PH Residential Apartments Building (4 Flats in every floor)

Al-Khor



73. G+3F+PH Residential Appartments Building (5 Flats in every floor)

Al-Khor



74. Iron Industries Factory (Labour+Office Buildingin & 3 Nos. of Workshops)

New Industrial Area



75. Al Tamimi Law Firm Offices

Al Jazeera Tower



76. Al Dhakira Package Sewage Treatment Plant (PTP) Upgrades at Existing

Al Dhakira Site



77. Al Shamal Package Sewage Treatment Plant (PTP) Upgrades at Existing

Al Shamal Site



78. 4 Nos. of Villas

Smaisima



79. 8 Nos. of (G+1+P Villa)+Out Blocks in Al Waab

Mr. Abdulla Hijji Al-Sulaiti



80. 12 Nos. of (G+1+P Villa)+Out Blocks

Um Al Amad





OUR CONTACT

Main Office

Office: Suhaim Tower - Al Sadd Street
Building No. 103, Street No. 231,

Zone No. 38, Flat No. 2, Second Floor

P.O. Box: 38495, Doha – Qatar

Tel: +974 44 155 175

Fax: +974 44 155 175

Email: info@pledgect.com

web: www.pledgect.com

    Pledge Const

