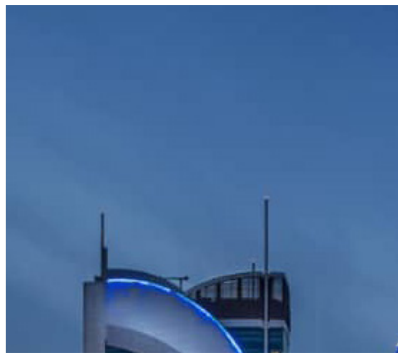


# Pledge

CONST & TRADING AGENCIES

CONSTRUCTION - ELECTROMECHANICAL - FITOUT - JOINERY



[www.pledgect.com](http://www.pledgect.com)

Tel: +974 44 155 175 | Fax: +974 44 155 175 | Email: [info@pledgect.com](mailto:info@pledgect.com)

    Pledge Const

# Table of Contents

<b>04</b>	<b>Who We Are</b>
<b>05</b>	<b>About Us</b>
<b>06</b>	<b>Organisation Chart</b>
<b>07</b>	<b>Our Services</b>
<b>09</b>	<b>Scope of Business</b>
<b>10</b>	<b>Current Position Future Look</b>
<b>11</b>	<b>Our Value Our Strength</b>
<b>12</b>	<b>Our Strategy Uniqueness &amp; Differentiation</b>
<b>13</b>	<b>Capabilities &amp; Potentials</b>
<b>14</b>	<b>Business Development &amp; Growing Lines</b>
<b>15</b>	<b>Policy Of Quality</b>
<b>16</b>	<b>Policy Of Safety</b>
<b>17</b>	<b>Our Projects</b>



**WE BRINGING LIFE TO SPACE**



# Who We Are

---

**PLEDGE** is a full service construction, MEP and fit-out company providing turnkey services for interior fit-out projects across a wide variety of sectors, including retail, hospitality, healthcare, fitness, commercial, residential and food and beverage. With our team of professionals, we deliver projects on time, on budget and with an exceptional level of quality.

We do all kind of services ranging from 3d design, turnkey interior fit-out, civil construction, carpentry, joinery & MEP works to meet the demands of various requirements.

We would like to offer our services to execute assigned works with the highest quality possible in compliance with Qatar construction specifications and international standards.

Our company, **Pledge** Constructions and Trading Agencies W.L.L. is well-equipped to help our clients deliver their projects on time, with budget and first class quality.

Our formula is simple: We hire the best professionals, understand our Client's needs and objectives, and then do our utmost to meet them.

## MISSION

Our Mission is to create interiors that reflect our client's personality by capturing their design dreams & making them a reality.

To be our clients' partner of choice by delivering innovative and effective solutions that continuously exceed their expectations.

To ensure that all our clients derives the maximum benefit from our dedicated personalized service, receiving innovative design, with the ability to implement in reality.

To be responsive to schedule, budget and functional goals without compromising the aesthetics of the creative notion.

## Vision

Creating a strong presence in Arabian gulf region especially in Qatar.  
To develop a sustainable long-term growth path.



# About Us

---

**PLEDGE** Constructions and Trading Agencies is governed under the Chairmanship of Mr. Hassan Ateek Al Ghanem, and Managed by Mr. Mohamed S. Abdelrhman (General Director), with a construction field experience of more than 10 years. It has a proven record for delivering large and challenging projects on time and satisfying the required budget, quality and specifications. **PLEDGE's** history, the company was registered in Qatar as a limited liability company with the name, "**Pledge** Constructions & Trading Agencies W.L.L." Thus began a history of uninterrupted and accelerated development specializes in designing, turnkey interior fit-out, civil construction, carpentry, joinery & MEP works.

The business of the company is conducted by its Employees, Managers and Executive Officers, under the direction of Chairman of the Board, to enhance the long-term value of the company for its Owners, the board of directors is elected by the partners to oversees and counsel management. The management is Chaired by Mr. Mohamed S. Abdelrhman – GM- & business's group founder, and Consists of Seven members as manager for each dept.

We have strong working relationships with most of the major real estate, architectural and project management companies.

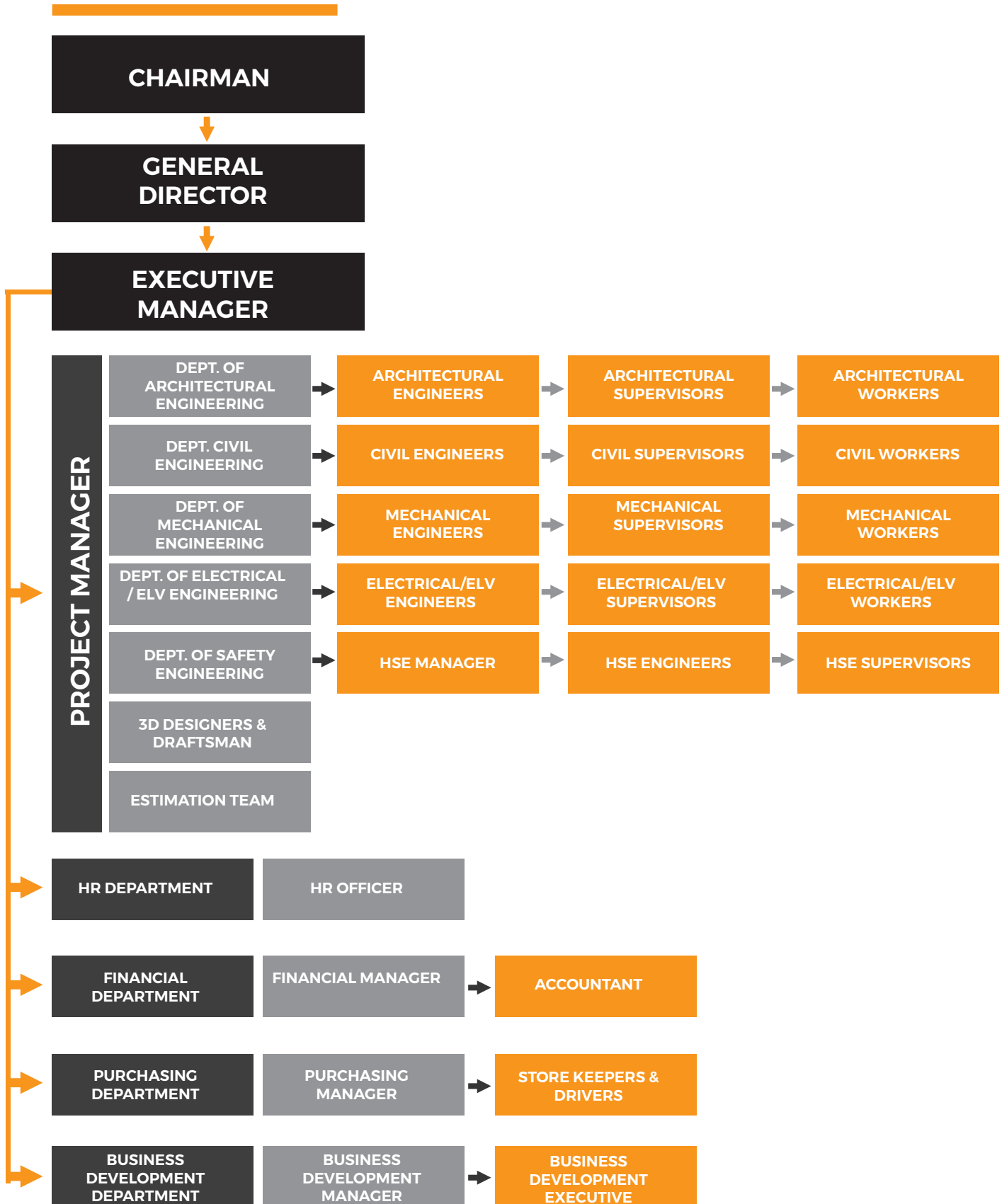
Our engagement is not only to keep up our track record of absolute delivery, but also to ensure a smooth handing over to our Clients by remaining involved in the project after its handover.

We believe in transparency, we act as a competent contractor at all times, keeping our Clients and their representatives fully informed at all stages of the project.

We care about our people, we are committed to provide working conditions that are the safest and the healthiest possible in all circumstances.

We care about our planet and our communities, their protection is our priority in every step we take.

# Organisation Chart



# Our Services

---



## ARCHITECTURE & INTERIOR ARCHITECTURE

Our architecture responds to the needs and aspirations of our clients and communities. We give form and meaning to rooms, buildings, and landscapes—always balancing internal functions with external demands of site, climate and culture.



## INTERIOR DESIGN & SPACE PLANNING

Our interior design teams study a client's business drivers and culture and create space that helps them flourish, researching alternatives, sharing knowledge and imagining new ways to solve the challenges.

By designing authentic, branded experiences that are seamlessly integrated into the architecture, we help our clients tell powerful stories, celebrate their culture and communicate their strategic messages.



## FITOUT & TURNKEY SOLUTIONS

We offer centrally coordinated management of all procurement, installation, startup and commissioning of the products and systems required to implement unique projects. Whether you have single or multiple sites, we have the capabilities and the expertise to function as your single-source service provider.

Our project management team relieves you from the burden of multi-supplier coordination by serving as a single point of accountability for all technical.



## SUPPLIES OF FINISHING MATERIALS, FURNITURE AND INTERIOR ITEMS

Whatever the setting, our designers select furniture and accessories that go well with the overall style and mood of a home.

The selection of furniture, lighting fixtures and interior elements that we offer, up to even lovely knick-knacks, is huge.

Our company has long been successfully cooperating with the best factories in China, Turkey, Italy, France, Belgium, Great Britain, Spain, Austria and Germany.



# MEP SERVICES

---

We are leading integrated MEP service provider with over the years of experience in providing expert solutions for industrial, retail, hospitality, healthcare, fitness, commercial, residential and food and beverage.



## ELECTRICAL SYSTEMS

As you decide who to hire for your next electrical project, we understand and we can help. we've solved many design puzzles over the years and electrical services are at the core of what we do best.

Our team has experience with many different kinds of electrical projects, and they will work efficiently and accurately to get the results you need. After years in the business we have an established reputation of quality and success.



## MECHANICAL HVAC SYSTEMS

Our Mechanical HVAC Engineering services division offers industrial, commercial & domestic solutions for a wide variety of customers, partners and clients in public as well as private sector.



## PLUMBING AND DRAIANCE SYSTEMS

Accomplishing great plumbing and drainage design means assembling a team that works on various aspects of your project while keeping multiple objectives in mind.



## FIRE PROTECTION SYSTEMS

Specialized in the field of active fire protection system that offers safe and efficient products and services like fire alarm system, fire extinguishers, sprinkler systems & fire suppression systems.

# Scope of Business

---

Starting, with personnel high qualified individuals in electro-mechanical and fit out technical experience. **PLEDGE** has set its sights on demanding many contracts since its inception.

The essence of **PLEDGE** today was defined by the range of its earliest projects, which included contracting, MEP for all types of constructions and real-estate consulting, engineering, installations, procurement, construction, testing & commissioning, as stipulated with the highest world modern standards for market facilities, and commercial properties in Qatar. **PLEDGE's** primary goal to meet customers, construction needs through quality work-man ship and successful relationships with business owners and the investors evidenced by our expanding base of Clients. **PLEDGE** offers national construction services, pre-constructed services, job site and project management, administrative support, and document control.

**PLEDGE** evaluates projects for constructability, provides cost estimates, helps maintain project scheduling, and works with owners to meet quality and time objectives.

**PLEDGE** can suggest cost effective means of construction and help select the best quality materials for each project at all Places in State of Qatar.

# Current Position

---

The business is going in more than 10 years of operation. Operations are conducted from facilities located at different locations in Qatar. Values of projects increased nearly 60% between 2011 & 2020 and are expected to do the more than five times double in 2021 & 2022.

These healthy business environment increases are expected to be continued for next years and same growing rates.



# Future Outlook

---

Enriching the technology competence of **PLEDGE**, application of know-how and strong presence with offering easy to access leading 3D visualization designing, constructions, MEP engineering, fit-out engineering and turnkey solutions with innovation and quality. **PLEDGE's** constructing projects continue to be its engine of growth for the future with a current backlog exceeding 25 million or during the 3 yrs.

Past divided into 2 million in beginning, and became 8 times double in the last 10 yrs. (2011-2020). The company seeks to repeat this achievement through the volume of work under the competition at the present time, which nearly equal 85 million Qatar Riyals by increasing the technical capacity, possibilities of human resources and strengthen of financial position in addition to creating joint venture with strong firms supporting this enormous and accelerated growth of the possibilities, Capacity and company size.





# Our Value

---

Excellence in every aspect – Premium quality and performance resulting from our Expertise, Efficiency, Attention about all details.

Exceptional Value – Value based on our strong financial position, our local knowledge, our resources and our technical expertise.

Constructive Partnerships – Strong, enduring relationships with clients, customers and partners based on trust, transparency and results.

Safety Focused – An important consideration in every aspect of our operations.

Setting global standards and respecting local sensitivities – Putting our expertise and experience to work for our clients, customers, partners and host communities.

Developing our people to match global standards and maintaining a commitment to use local materials and suppliers.

# Our Strength

---

Ultimately it is for others to judge our strengths, but we believe that these actors set us apart from our competitors.

Our People – We have skilled working team and staff in the range of services provided their expertise, hunger for knowledge and passion to excel. Above all, their loyalty and commitment to strength ledge construction.

Our Resources – Capital resources that enable us to respond faster than our construction competitors, procurement systems of materials that enable us to manage leading prices.

Our Experience – A tradition for excellence and achievement reaching back over 10yrs, An ability to share our client's perspective that gives us a unique understanding of their needs throughout the project cycle.

Our Investment Capacity – Financial resources, partnerships and relationships that allow us to partner with clients as an investor and a contractor. The ability to self- perform and to diversify into new values.

Our Entrepreneurial Attitude – A strong appetite for investment and diversification to grow our business and increase revenue streams.

# Our Strategy

---

## OUR strategy is CREATION, DEVELOPMENT & MODERNIZATION

We will work to deliver exceptional value for our partners by following a coherent and considered strategy:

- A.** Targeting large, complex construction projects in this emerging market.
- B.** Expanding investments in the value, productivity and downstream activities provided carefully.
- C.** Working in partnership with local and global leaders.
- D.** Investing in the best people and technologies.
- E.** Maintaining our commitment to quality and safety.
- F.** Being a good corporate citizen when/wherever we operate.
- G.** Providing products and services for people in developing economies.
- H.** Searching for new opportunities in order to deliver exceptional value.

# Uniqueness & Differentiation

---

**PLEDGE CONSTRUCTIONS AND TRADING AGENCIES W.L.L**, will continue the uniqueness in the field of constructions, MEP and fit-outs to serve the national progress and development. As long as it was and still one of constructions and MEP contractors are trusted to carry out projects of the investment on a national scale. Whereas over the past ten years, the uniqueness of the company to engage in the implementation of more projects with different values , and the preference diversity projects between traditional and modern building theatres, hotels, hospitals, schools, educational centers and power stations.

The company utilizes the most modernist technology to enable it to not only provide competitive pricing but also for the monitoring of existing projects.

Through the use of an updated projects detail, **PLEDGE** can post pictures of current projects on its website. This allows customers to constantly monitor status of projects moment by moment. **PLEDGE** will continue to secure the uniqueness in the booming region, with focus on the national market place.

# CAPABILITIES & POTENTIALS

## THE POSSIBILITIES OF INTEGRATION AND DEVELOPMENT

The company is operating through an integrated framework of systems of work and integrated network of methods to secure **PLEDGE's** uniqueness and differentiation of the service by trustworthy long term agreement or by starting finance different branches of business such as transporting fleet, heavy equipment supplying, central air-conditioning duct fabrication, switchgears panels fabrication, installations and isolate workshops, MEP works components branded items and products and other related to our business which help and support our superiority in the market, reduce dependence on foreign market, preserves the company's uniqueness and speed in performance and quality assurance, through specialty in the work of constructions, MEP and fit-outs as well as units, departments and engineering design and technical installation up to turnkey.



# BUSINESS DEVELOPMENT & GROWING LINES

## BUSINESS PRINCIPLES

To build value, performance and leadership into **PLEDGE**, responsibility, respect and determination are key assuming responsibility, and acting with respect and determination makes it possible to nurture **PLEDGE's** traditional strengths - our style technology leadership, our pioneering spirit and our ability to be at home everywhere. That is our legacy, and our future. The key to success lies in how well all of us understand and apply the business principles - demonstrating personal, professional and corporate responsibility, showing respect for the views and needs of others and applying our shared determination to win the trust of our clients and make something in the future make us always in mind of our beneficiaries and outset of the construction business leaders.

# POLICY OF QUALITY

---

Perfect teamwork to provide high quality product and services to our valuable customers as their requirements on time, every time.

## OBJECTIVE

- A.** Quality checking at every stage.
- B.** To become zero complaint organization on our services on 2021-2022.
- C.** Immediate action upon customer complaints within 24hours.
- D.** Adoption of update knows for the enhancement of performance.
- E.** To create and maintain a culture of quality within the group.
- F.** To ensure that all our employees are trained in quality assurance and that this training is ongoing at all levels.
- G.** To meet all legal requirements.
- H.** To provide the resource necessary to achieve the required level of quality.
- I.** To provide documentary evidence of all quality control measures.
- J.** To continually review, improve and implement quality control and best practice procedures.
- K.** To seek feedback from our clients as to the level of quality delivered.

# POLICY OF SAFETY

---

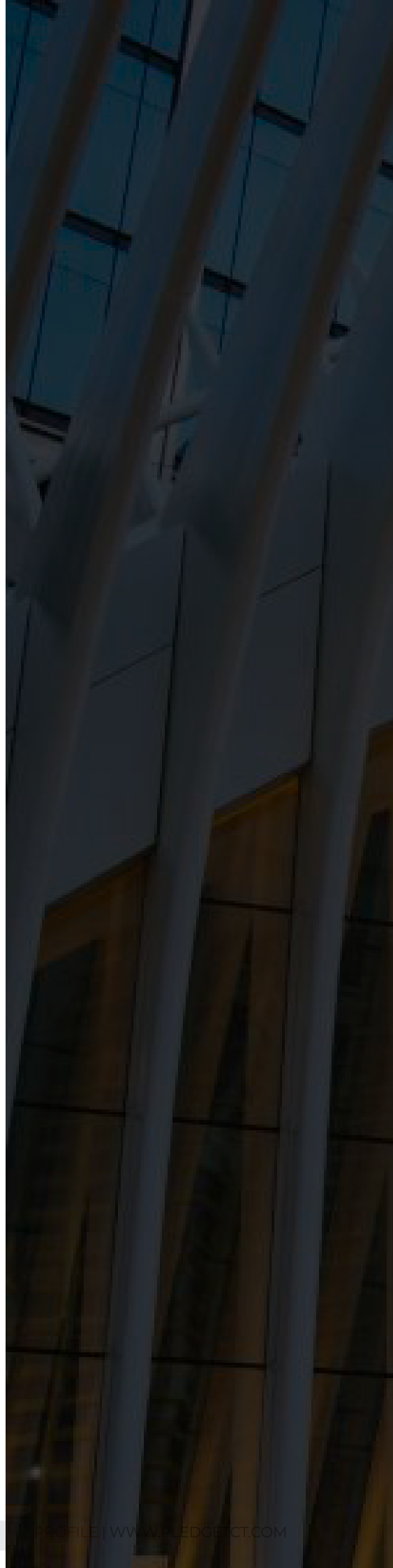
Ensure the education, interest awareness training of new employees in safe working methods before the assumption of duty.

Ensure that the organization is a safe place, and the environment, facilities, equipment and substances are subject to safe system of work to prevent risks to health or safety.

Promote personal responsibility and effort on the part of everyone to avoid and prevent health hazards and injuries to themselves and to others who may be affected by their acts or omissions and to co-operate with the organization to comply with its duties, requirements and statutory obligations.

Ensure the use of defensive driving techniques by car drivers and machinery operators. Ensure that the safety is a line management responsibility. Monitor effectiveness of safety policy.

Display and publicize this statement and review it at least by annually.







# OUR PROJECTS

---

# PROJECTS IN QATAR

<b>Additional Out Majlis for Existing Villa 74, St 642, Zone 56 – Abo Hamour.</b>	Mr. Mohammed Mubarak	Design and build
<b>Voute Café, Unit No.2 @ MIA Park, Doha Corniche.</b>	Qatar Muesuems (Meusem of Islamic Arts)	Design and build
<b>Moons Café @ MIA Park Zone 3, Doha Corniche.</b>		
<b>Barzan Prep Independent School for Girls - Umm Salal, Qatar.</b>	Qasr Al Andalus Co.W.L.L	Installations work of false ceiling & drywall partitions
<b>Rouda Bint Mohamed Secondary Girls - Umm Salal, Qatar.</b>		
<b>ISF - Duhail, Qatar.</b>		
<b>Cluster Project At QDP.</b>	Alghanim International-Qatar	Installations work of false ceiling
<b>Lu Café - Ground Floor - Unit No C24B - Ground Floor - Lagoona Mall.</b>	Mr. Mohammed Atiq F B Al-Hamad	Design and build
<b>Lily House Café, Kitchen Unit G165A- Ground Floor – Mall of Qatar.</b>	Mr. Rashid Mohammed R S Al-Khayareen	Full MEP & fitout works
<b>Lily House Café, Kiosk Unit G165- Ground Floor – Mall of Qatar.</b>	Mr. Rashid Mohammed R S Al-Khayareen	Full MEP & fitout works
<b>Z Café - Aspire Park – Aspire Zone.</b>	Mr. Awash Ayed M A Al-Qahtani	3d designing
<b>974 Restaurant - Muither Branch</b>	Mr. Mohammed Elnemy	Design and build
<b>G+1 Villa + Out Kitchen, Out Majlis, Guard Room &amp; S. Pool – Ain Khalid.</b>	Mr. Abdul Aziz Al-Mahmoud	Full MEP & fitout works
<b>Al Akeel Restaurant &amp; Café - Mushaireb Area.</b>	Mr. Abdul Aziz Abdullah Al-Haydous	Design and build
<b>G+1+PH Villa + Out Kitchen &amp; Out Majlis – Ain Khalid.</b>	The heirs of the essence of Ismail Al Suwaidi	Electrical works & false ceiling works
<b>Tawasol Offices - 5th Floor- AlKhaleej Takaful Insurance Tower - Grand Hamad Street.</b>	The Glown Company	Design and build

<b>Graze Restaurant, BGF-F 01, in Ground Floor, at Palm Tower-B.</b>	Interprogetti Company	Full MEP & fitout works
<b>Spyra Salon &amp; SPA - Villa No.19 Al Thumama.</b>	The Glow Company	Design and build
<b>Flat White Coffee Shop Unit No.16551 in Ground Floor @ Qatar Foundation</b>	Interprogetti Company	Full MEP & fitout works
<b>Ridge La Cuisine Restaurant, Unit No. B3G06 in Ground Floor @ Al Hazm Mall.</b>	Interprogetti Company	Full MEP & fitout works
<b>Proposed Store Room of Ridge Restaurant, Unit No. UB/S-30 in Upper Basement Floor of Al Hazm Mall.</b>	Interprogetti Company	Full MEP works
<b>Walter's cafe in Ground Floor @ Twin Towers, Lusail City.</b>	Interprogetti Company	Full MEP & fitout works
<b>Dirawandi Restaurant Unit No. T10 in Third Floor - Tawar Mall.</b>	Interprogetti Company	Fitout works
<b>Occhiali Shop No. F69 in First Floor Tawar Mall.</b>	Interprogetti Company	Fitout works
<b>Liberty Suites Hotel - Bin Mahmoud.</b>	Liberty Suites Hotel	Fitout works
<b>World Wonder Burgers, Unit No. 168, QQ 07 - The Pearl.</b>	Interprogetti Company	Full MEP & fitout works
<b>Yateem Optician Shop No: M-50 Al Mirqab Mall.</b>	Interprogetti Company	Full MEP & fitout works
<b>Yateem Optician Offices No.2, 3 &amp; 4 in Fourth Floor of Al Qamra Commercial Building - Al Saad Street.</b>	Interprogetti Company	Full MEP & fitout works
<b>Attila Mongolian Grill Unit No: FE-566B in First Floor - Doha Festival City.</b>	Interprogetti Company	Full MEP & fitout works
<b>Tuc Tuc Shop No: EE-01A in First Floor - Lagoona Mall.</b>	United Business Development.	Full MEP & fitout works
<b>Eureka Kids Shop No.: EE-10 in First Floor - Lagoona Mall.</b>	United Business Development.	Full MEP & fitout works
<b>Renault Showroom - Salwa Road.</b>	Marmi Engineering Company.	Fitout works
<b>Man'oushe Street Restaurant in Woqood Petrol Station -Al Khor.</b>	United Business Development.	Full MEP & fitout works
<b>Al Rashedy Clothes - Shop No. (11&amp;12) in Ground Floor - Q-Mall, Al Charafa.</b>	Marmi Engineering Company.	Full MEP & fitout works

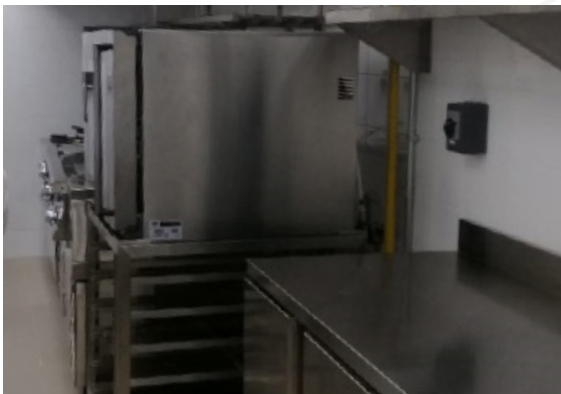


<b>Fitout works for Swimming Pool Area &amp; GYM Area in Existing 3 Palaces – Charrafa.</b>	Sheikh Abdulaziz Al Thani	Full MEP & fitout works
<b>VIP Majlis – Al Khor Beach.</b>	Sheikh Abdulaziz Al Thani	Full MEP & fitout works
<b>Health Center – Muither.</b>	Qasr Al Andalus Co.W.L.L	Installations work of false ceiling
<b>(B+G+1+PH) Villa &amp; Out Blocks in Al Nasr Street.</b>	Mr. Hamad Abdulla Al-Sulaiti.	Electrical works
<b>Proposed 3 Villas + Swimming Pool in Al Khor.</b>	Waves International Co.	Electrical works
<b>Al Tahara Car Wash – Industrial Area.</b>	Mr. Ahmed Gouda	Electrical works
<b>8 Nos. of Qatar Schools in Al Daayen, Smaisima, Um Slal Mohammed, Um Slal Ali &amp; Al Khor.</b>	Tarsheed, the National Program for Conservation and Energy Efficiency launched by (KAHRAMAA).	Installation of new energy efficient LED lamps instead of traditional existing inefficient lamps.
<b>(G+1+PH+Out Blocks) Villa &amp; Swimming Pool in Um Elseneem.</b>	Mr. Mohammed Talib Sabir	Full MEP & fitout works + panoramic elevator
<b>B+G+3F+PH Residential Apartments Building (4 Flats in every floor) at Al Khor</b>	Samid Contracting & Trading Co.	Electrical works
<b>G+3F+PH Residential Apartments Building (5 Flats in every floor) at Al Khor</b>	Samid Contracting & Trading Co.	Electrical works
<b>Iron Industries Factory (Labour+Office Buildingin &amp; 3 Nos. of Workshops) in New Industrial Area.</b>	Khalid Iron Industries./Khalid Ahmed Al-Thani.	Electrical works
<b>Al Tamimi Law Firm Offices at Al Jazeera Tower</b>	Al Tamimi	Full MEP & fitout works
<b>Al Dhakira Package Sewage Treatment Plant (PTP) Upgrades at Existing Al Dhkira Site.</b>	Alghanim International-Qatar/ Public Works Authority 'Ashghal'.	Electrical works
<b>Al Shamal Package Sewage Treatment Plant (PTP) Upgrades at Existing Al Shamal Site.</b>	Alghanim International-Qatar/ Public Works Authority 'Ashghal'.	Electrical works
<b>Modifications of 3 Villas in Abo Hamour.</b>	Waves International Co.	Electrical upgrade works
<b>(G+1+PH) Villa &amp; Out Blocks in Al Sailya.</b>	Qualios Co.	Electrical works
<b>4 Nos. of Villas in Smaisima.</b>	Afifi for Trading and Contracting Co.	Electrical works
<b>(G+1+PH) Villa &amp; Out Majlis in Al Rayyan.</b>	Afifi for Trading and Contracting Co.	Electrical works

<b>(G+1+PH) Villa &amp; Out Majlis in Al Murrah.</b>	Afifi for Trading and Contracting Co.	Electrical works
<b>Proposal to add First Floor for Existing Villa in Um Slal Mohammed.</b>	Afifi for Trading and Contracting Co.	Electrical works
<b>Proposal to add First &amp; P-House Floor for Existing Villa in Al Wakra.</b>	Afifi for Trading and Contracting Co.	Electrical works
<b>(G+1+PH) Villa &amp; Out Blocks in Al Wukair.</b>	Afifi for Trading and Contracting Co.	Electrical works
<b>8 Nos. of (G+1+P Villa)+Out Blocks in Al Waab.</b>	Mr. Abdulla Hijji Al-Sulaiti.	Electrical works
<b>12 Nos. of (G+1+P Villa)+Out Blocks in Um Al Amad.</b>	Qatar Development Trading & Contracting.	Electrical and plumbing works
<b>4 Nos. of (G+1+P Villa) + Out Blocks in Al Zekret Street.</b>	Qatar Development Trading & Contracting.	Electrical works
<b>(G+1+PH) Villa &amp; Out Majlis in Al Rayyan.</b>	Mr. Abdulla Anbar	Electrical works
<b>Construction of 69 Villas at umm Iekhba.</b>	Qatar Infrastructure Co.	Electrical works
<b>Paris Gallery Located at Ground Floor - Ezdan Mall - Charafa.</b>	Design Plus	False ceiling & glass works

# Lily House Café

Mall of Qatar





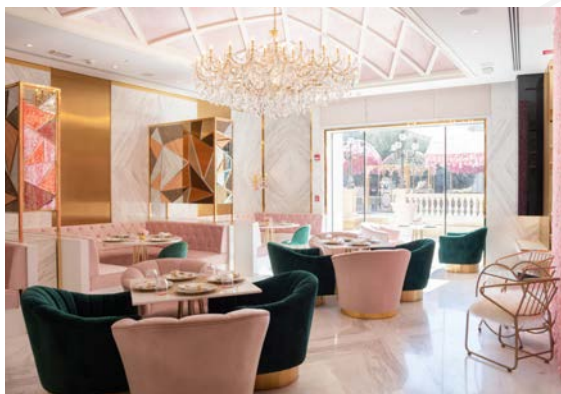
# Ridge La Cuisine Restaurant

Al Hazm Mall



# Rosemary Restaurant Shop

Al Hazm Mall





# Lu Café

Lagoona Mall



# Moons Café

MIA Park





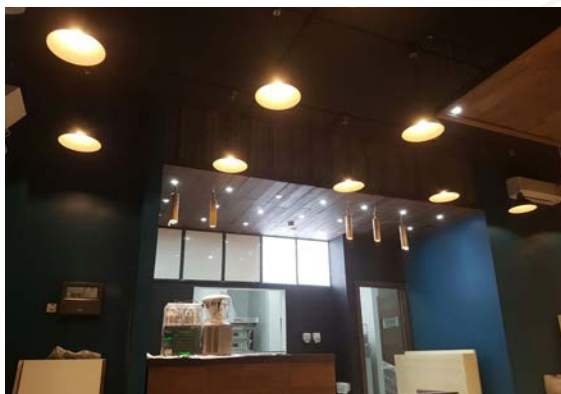
# Graze Restaurant

Palm Tower



# Man'oushe Street Restaurant

Al Khor





# Walter's cafe

Twin Towers, Lusail City



# 974 Restaurant

Muither Branch





# Voute Café

MIA Park



# Z Café

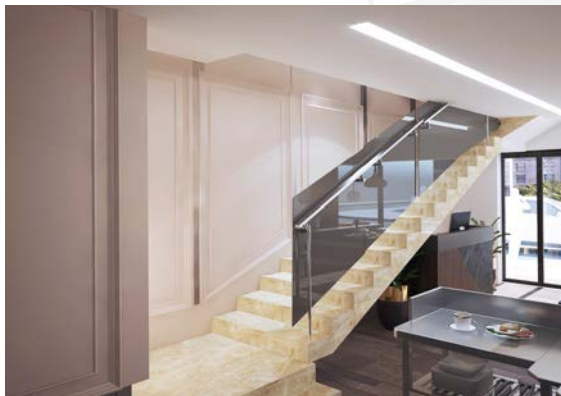
Aspire Zone





# Al Akeel Restaurant & Café

Mushaireb Area



# Attila Mongolian

Doha Festival City





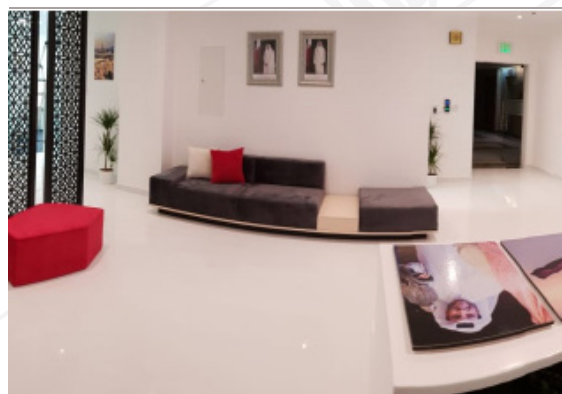
# Spyra Salon & SPA

Al Thumama



# Tawasol Offices

Grand Hamad Street



# Occhiali Shop

Tawar Mall



# Renault Showroom

Salwa Road





# Yateem Optician Shop

Doha Festival City



# Yateem Optician Shop

Al Mirqab Mall



# Eureka Kids

Lagoona Mall



# Tuc Tuc Shop

Lagoona Mall





# (G+1) Villa +Out Blocks & Swimming Pool

Um Elseneem



# (G+1+PH) Villa & Out Blocks & Swimming Pool

Ain Khalid



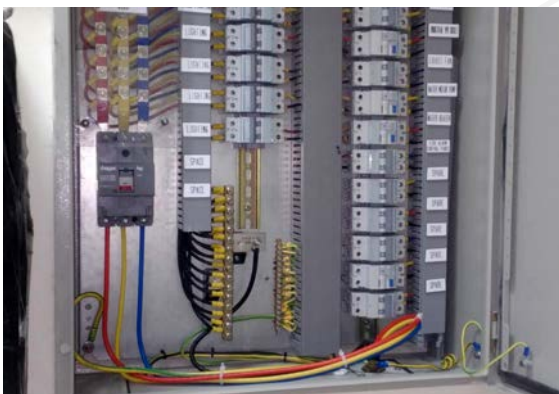
# Al Shamal Package Sewage Treatment Plant (PTP)

Al Shamal



# Al Dhakira Package Sewage Treatment Plant (PTP)

Al Dhakira





# Majlis for Existing Villa

Abo Hamour



# VIP Majlis

Al Khor Beach



# 4 Nos. of Villas

Smaisima



# 8 Nos. of (G+1+P Villa)+Out Blocks

Al Waab





## 8 Nos. of Qatar Schools

Al Daayen, Smaisima, Um Slal Mohammed,  
Um Slal Ali & Al Khor Areas



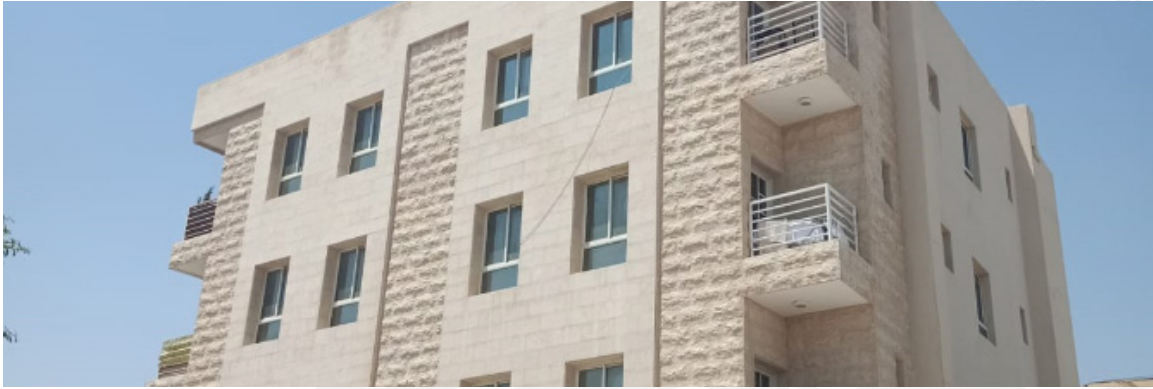
## 12 Nos. of (G+1+P Villa)+Out Blocks

Um Al Amad



# B+C+3F+PH Residential Apartments Building

Al Khor



# G+3F+PH Residential Apartments Building

Al Khor





# Iron Industries Factory (Labour+Office Building & 3 Nos. of Workshops)

New Industrial Area



# Proposed 3 Villas + Swimming Pool

Al-Khor





## OUR CONTACT

### **Main Office**

Office: Suhaim Tower - Al Sadd Street  
Building No. 103, Street No. 231,

Zone No. 38, Flat No. 2, Second Floor

P.O. Box: 38495, Doha – Qatar

Tel: +974 44 155 175

Fax: +974 44 155 175

Email: [info@pledgect.com](mailto:info@pledgect.com)

web: [www.pledgect.com](http://www.pledgect.com)

    Pledge Const

